





Welcome to the world of **next generation bench-top lab equipment**

Great minds, driven by passion and knowledge, require a dependable partner that can reach up to their level and just like them, perform brilliantly whenever opportunity emerges.

Neuation Technologies is on a mission to provide such great minds, a perfect lab partner which is flawless. With a strong focus on user-centric design, we have created a range of cutting-edge bench-top devices that offer the perfect blend of innovation, precision, user efficiency and durability.





iFuge M08

Smart Personal Centrifuge



**Max. 6000 RPM,
8 x 1.5 / 2 ml**

- ◆ Magnet assisted changeable rotor without any additional tool
- ◆ Rotor with closed construction for better airflow, increased efficiency and low heat generation
- ◆ Electronic safety brake
- ◆ Robust body design for long term sturdy performance
- ◆ Rotor options :
8 X 1.5 / 2 ml & 2 x 8 PCR strips

iFuge BL08 VT

Smart Personal Centrifuge (Microprocessor Controlled)



**Max. 6000 RPM,
8 x 1.5 / 2 ml**

- ◆ Brushless DC motor
- ◆ Magnet assisted changeable rotor without any additional tool
- ◆ Variable speed and time setting
- ◆ Automatic imbalance detection
- ◆ Unparalleled accuracy of + / - 25 RPM
- ◆ Electronic safety brake
- ◆ Rotor options :
8 X 1.5 / 2 ml & 2 x 8 PCR strips

iFuge M15K

High Speed Personal Centrifuge



**Max. 15000 RPM (15596g),
12 X 1.5 / 2 ml**

- ◆ Brushless DC motor
- ◆ Microprocessor controlled
- ◆ Quick and convenient user interface
- ◆ Automatic imbalance detection
- ◆ Snap fit rotor lid for easy loading & removal of sample
- ◆ Rotor options :
12 X 1.5 / 2 ml tube,
2 X 8 X 0.1 / 0.2 ml PCR strip, Haematocrit 24 X 40 mm capillary tube

iFuge M12P

High Speed Micro Centrifuge



**Max. 15000 RPM (15596g),
12 x 1.5 / 2 ml**

- ◆ Brushless DC motor
- ◆ Microprocessor controlled
- ◆ Superior airflow design
- ◆ Quick and convenient user interface
- ◆ Robust structure with two shell metal enclosure
- ◆ Optional USB connectivity
- ◆ Autoclavable metal rotor
- ◆ Rotor options :
12 X 1.5 / 2 ml tube,
2 X 8 X 0.1 / 0.2 ml PCR strip

iFuge D12

Table Top Genius



**Max. 15000 RPM (15596g),
12 x 1.5 / 2 ml**

- ◆ Brushless DC motor
- ◆ Microprocessor controlled
- ◆ Digital display
- ◆ Lid lock safety
- ◆ Automatic imbalance detection
- ◆ Rotor options :
2 X 8 X 0.1 / 0.2 ml PCR strip rotor & Haematocrit 24 X 40 mm capillary tubes

iFuge M18

High Speed Micro Centrifuge



**Max. 15000 RPM (18262g),
18 x 1.5 / 2 ml**

- ◆ Brushless DC motor
- ◆ Microprocessor controlled
- ◆ Quick and convenient user interface
- ◆ Robust structure with two shell metal enclosure
- ◆ Automatic imbalance detection
- ◆ Lid lock safety



iFuge M24PR

Refrigerated Lab Champion



**Max. 15000 RPM (22388g),
44 x 1.5 / 2 ml**

- ◆ Refrigerating temperature range up to -20°C
- ◆ Programmable up to 99 programs with 4 lines each
- ◆ Stainless steel rotor chamber
- ◆ Brushless DC motor
- ◆ Microprocessor controlled

ROTOR OPTIONS



24 x 2ml (21420g)



44 x 2ml (22388g)



8 x 5ml (18461g)



4PCR Strip (15397g)

iFuge C4000 / CS03 / CS2P

Clinical Swing Out / Fixed Angle Centrifuge



Max. 4000 RPM

- ◆ Programmable up to 99 programs
- ◆ Automatic imbalance detection with auto cut-off
- ◆ Quick and convenient user interface with speed and time setting
- ◆ Microprocessor controlled
- ◆ One touch RPM to RCF conversion and short spin
- ◆ Brushless DC motor

ROTOR OPTIONS

C4000



Swing out
6x10 ml | 2270g



Fixed angle
8x15ml | 1950g



Fixed angle
16x10ml | 2180g

CS2P



Swing out
2 x Microplates | 560g

CS03



Swing out
2 x 50 ml | 1470g



Swing out
3 x 50 ml | 1470g

iFuge D06

Doctor Centrifuge



**Max. 6500 RPM,
6 X 15 ml (3684g),
8 X 15 ml (3873g)**

- ◆ Brushless DC motor
- ◆ Microprocessor controlled
- ◆ Adaptors for all standard blood collection tubes
- ◆ Automatic imbalance detection
- ◆ Lid lock safety
- ◆ Autoclavable rotor

iFuge HCT

Hematocrit Centrifuge



**Max. 12000 RPM (14119g),
24 x 75 mm Capillary Tube**

- ◆ Brushless DC motor
- ◆ Microprocessor controlled
- ◆ Automatic imbalance detection
- ◆ Favourite program setting
- ◆ Lid lock safety
- ◆ Supplied with capillary reading device



iFuge L400P / L30PR

Versatile Lab Centrifuge Without / With Refrigeration



Max. 4500 RPM, 4 x 100 ml

- ◆ Brushless DC motor
- ◆ Microprocessor controlled
- ◆ Automatic imbalance detection
- ◆ Selectable acceleration and deceleration rate
- ◆ Lid lock safety
- ◆ Multiple swing out and fixed angle rotor option
- ◆ Refrigerating temperature range up to -10°C (For L30PR)
- ◆ Store up to 99 programs

MULTIPLE ROTOR OPTIONS

Swing Out Rotors		Fixed Angle Rotors	
Capacity	RCF x g	Capacity	RCF x g
16 x 15 ml	3485	16 x 15 ml	3144
12 x 15 ml	3485	12 x 15 ml	3144
6 x 50 ml	3530	8 x 15 ml	2644
4 x 50 ml	3485	6 x 50 ml	2644
4 x 100 ml	3164	4 x 50 ml	2644
32 x 10 ml	3164	4 x 100 ml	2559
2 Micro plates	2377	24 x 15 ml	2852
		30 x 15 ml	2729

iFuge UC01

Universal Lab Centrifuge



Max. 15000 RPM (18270g)

- ◆ Brushless DC motor
- ◆ Microprocessor controlled
- ◆ Auto rotor detection
- ◆ Variable speed and time setting
- ◆ Automatic imbalance detection
- ◆ Lid lock safety
- ◆ Store up to 99 programs
- ◆ Multiple rotor options

Rotor Name	Max Speed (RPM)	Max RCF x g
6 x 10 ml Swing out Rotor (100 mm tube)	4000	2270
6 x 10 ml Swing out Rotor (75 mm tube)	4000	1840
8 x 15 ml Fix angle Rotor	5000	3050
16 x 10 ml Fix angle Rotor	5000	3400
3 x 50 ml Swing out Rotor	3200	1480
2 x 96 well PCR plate Rotor	2200	560
18 x 2 ml tube Rotor	15000	18270
12 x 2 ml tube Rotor	15000	15750
2 x 8 strip PCR Rotor	15000	13260
24 x 75 mm Haematocrit Rotor	12000	14220
10 x 5 ml Rotor	13500	15920
24 x 2ml & 0.2 ml PCR combined Rotor	13000	16260

iFuge UC02

Universal Lab Centrifuge



Max. 15000 RPM (22388g), 4 x 100 ml

- ◆ Brushless Motor
- ◆ Microprocessor controlled
- ◆ Auto rotor detection
- ◆ Selectable acceleration and deceleration rate
- ◆ Large backlit LCD display
- ◆ Multiple swing out and fixed angle rotor option
- ◆ Automatic imbalance detection
- ◆ Programmable up to 99 programs with 4 lines each

MULTIPLE ROTOR OPTIONS

Fixed Angle Rotors			Swing Out Rotors		
Capacity	RPM	RCF x g	Capacity	RPM	RCF x g
24 x 2 ml	15000	21420	4 x 100 ml	4500	3164
4 x 8 PCR	15000	15397	4 x 50 ml	4500	3485
8 x 5 ml	15000	18461	16 x 15 ml	4500	3485
44 x 2 ml	15000	22388	32 x 10 ml	4500	3164
4 x 100 ml	6000	4628	2 x Microplates	4500	2377
4 x 50 ml	6000	4750			
6 x 15 ml	6000	4910			
16 x 15 ml	6000	4910			
24 x 15 ml	6000	5070			
30 x 15 ml	6000	4870			



iSwix VT

Digital Vortex Mixer



Max. 4200 RPM, 4 mm Ø

- ◆ Brushless DC motor
- ◆ Microprocessor controlled
- ◆ Speed adjustment for different loads
- ◆ Choose between touch, continuous and stand-by mode
- ◆ Set time from 1 - 999 minutes and continuous mode.
- ◆ IP 42 compliant design
- ◆ Also available in analog variant - iSwix (2800 RPM)

iSwix / iSwix VT

STANDARD ATTACHMENT



Round Disc

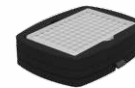


Cup Attachment

OPTIONAL ATTACHMENTS



Micro Centrifuge Tube
20 x 1.5/2ml



96 Well
Micro Plate



Flask

iSwix MV

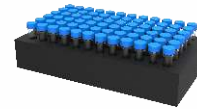
Digital Multi Tube Vortexer



Max. 2500 RPM, 4mm Ø

- ◆ Brushless DC motor
- ◆ Microprocessor controlled
- ◆ Programmable pulse mode
- ◆ Variable speed and time setting
- ◆ CW/CCW motion for effective mixing

STANDARD ATTACHMENTS



72 x 1.5/2 ml tubes



60 x 7 ml tubes



45 x 15 ml tubes



18 x 50 ml tubes



6 x 250 ml flasks



7 x 50 ml
Quechers assay

Optional Attachment

iSwix Jr. / Jr. VT

Mini Vortex Mixer

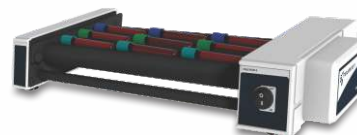


Max. 4500 RPM, 4.5 mm Ø

- ◆ Brushless DC motor (iSwix Jr. VT)
- ◆ Die cast base, no walking issue
- ◆ Unique suspension design
- ◆ 3500 RPM - iSwix Jr. (Fixed Speed)
- ◆ 4500 RPM - iSwix Jr. VT (Variable Speed)
- ◆ Small footprint

iRoll RnR4

Tube Roller



Max. 30 RPM, 9 x 5 ml

- ◆ Gentle rocking and rolling motion for optimum mixing
- ◆ ± 2 RPM speed accuracy
- ◆ Tool free roller removal & installation for easy cleaning
- ◆ Accommodates various tube sizes
- ◆ IP 21 compliant design
- ◆ Infinite / continuous mode of operation

iRoll RnR6

Digital Tube Roller



Max. 80 RPM, 15 x 5 ml

- ◆ Brushless DC motor
- ◆ Microprocessor controlled
- ◆ Unique run-pause-run programmable pulse mode
- ◆ Infinite / continuous mode of operation
- ◆ Set up to 9 user defined program
- ◆ Tool free roller removal & installation for easy cleaning
- ◆ Variable speed setting from 10 to 80 RPM with an accuracy of ± 1 RPM

iRoll DR24

Digital Disc Rotator

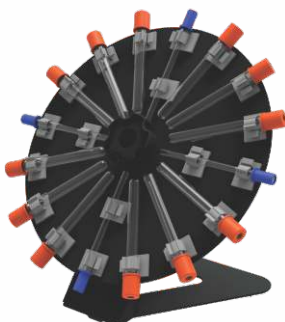


Max. 80 RPM, 24 x 15 ml

- ◆ Brushless DC motor
- ◆ Set up to 9 user defined programs
- ◆ Variable speed (10 - 80 RPM) and timer setting
- ◆ Pulse mode function with CW / CCW mixing
- ◆ Set angle from 0° to 90°
- ◆ Multiple optional attachments for 12 X 50 ml, 24 X 15 ml, 44 X 2 ml tubes

iRoll DR16

Disc Rotator



**Max. 30 RPM,
12 x 5 ml + 4 ESR Tubes**

- ◆ Gentle rotatory motion
- ◆ Fixed speed of 30 RPM with an accuracy of ± 2 RPM
- ◆ Fixed disc plate angle of 38°
- ◆ Tool free disc plate removal & installation
- ◆ Suitable for blood collection tubes & 4 ESR tubes

iRoll PR22

Plate Rotator



Max. 30 RPM, 22 x 15 ml

- ◆ Fixed speed of 30 RPM with an accuracy of ± 2 RPM
- ◆ Tool free plate removal & installation
- ◆ Noiseless operation
- ◆ Multiple optional attachments for 12 X 15 ml + 4 X 50 ml, 22 X 15 ml tubes

iRoll PR35

Digital Plate Rotator



Max. 80 RPM, 35 X 15 ml

- ◆ Brushless DC motor
- ◆ Variable speed from 10 to 80 RPM with an accuracy of ± 1 RPM
- ◆ Variable timer setting from 1 to 999 minutes and infinite mode
- ◆ Set up to 9 user defined programs
- ◆ Pulse mode function with CW / CCW mixing
- ◆ Multiple optional attachments for 35 X 15 ml, 16 X 50 ml, 55 X 2 ml tubes

iStir Uno / Quattro

Motorless Magnetic Stirrer



**Max. 1500 RPM (Uno),
Max. 1200 RPM (Quattro)**

- ◆ Compact and slim design
- ◆ Capacity of 1 x 800 ml (iStir Uno) 4 x 500 ml (iStir Quattro)
- ◆ IP 65 compliant design
- ◆ Pulse mode function
- ◆ Variable speed and time setting
- ◆ Corrosion resistant stainless steel top
- ◆ Truly maintenance free - no moving parts



iStir Uno+ / Penta+ Slim Magnetic Stirrer



Max. 2200 RPM, 10 Ltr.

- ◆ Brushless DC motor
- ◆ Microprocessor controlled
- ◆ Last run memory function
- ◆ Pulse mode function
- ◆ Ultra slim design
- ◆ IP 44 compliant design (iStir Uno+)
- ◆ IP 42 compliant design with capacity of 2 ltr. solution per station (iStir Penta+)

iStir MS10 / MS10a Magnetic Stirrer



Max. 2200 RPM, 10 Ltr.

- ◆ Variable speed from 200-2200 RPM (iStir MS10) 400-2200 RPM (iStir MS10a)
- ◆ Digital display with variable timer setting from 1 to 999 minutes and infinite mode (iStir Ms10)
- ◆ Pulse mode function (iStir MS10)
- ◆ IP 43 compliant design
- ◆ Non corrosive stainless steel top surface

iStir 25L Magnetic Stirrer



Max. 2200 RPM, 25 Ltr.

- ◆ Brushless DC motor
- ◆ Microprocessor controlled
- ◆ Non corrosive stainless steel top
- ◆ Adjustable speed from 200 to 2200 RPM
- ◆ Timer setting & infinite mode
- ◆ IP21 compliant design

iStir 50L / 200L High Capacity Magnetic Stirrer



**Max. 1000 RPM, 50 Ltr.
Max. 600 RPM, 200 Ltr.**

- ◆ Brushless DC motor
- ◆ Microprocessor controlled
- ◆ Set acceleration rate
- ◆ Adjustable height support
- ◆ Accuracy of ± 10 RPM
- ◆ Power overload safety feature
- ◆ Pulse mode function

iStir HP 5M / 10M / 15M Multi-Station Digital Hot Plate Stirrers



**Max. 1500 RPM,
400 ml each, 120°C**

- ◆ Brushless DC motor
- ◆ Programmable pulse mode
- ◆ Variable temperature and timer setting
- ◆ IP 42 compliant design
- ◆ Available in 5, 10 and 15 position models
- ◆ Also available in stirrer only version

iStir HP 550 Prime Digital Hot Plate Stirrer



**Max. 2200 RPM, 20 Ltr.,
Up to 550°C**

- ◆ Microprocessor controlled
- ◆ Chemical / splash proof ceramic plate
- ◆ 3 heating mode - rapid, gradual and accurate
- ◆ Highly chemically inert composite material body
- ◆ Safe temperature setting up to 575°C
- ◆ Power intermittent mode

iStir HP 350 / 550

Digital Hot Plate Magnetic Stirrer



**Max. 2200 RPM, 20 Ltr.,
350°C / 550°C**

- ◆ Brushless DC motor
- ◆ Microprocessor controlled
- ◆ Constant speed across diverse loads and viscosity
- ◆ Slip detection mode
- ◆ Safe temperature setting
- ◆ 3 heating modes - rapid, gradual and accurate
- ◆ Set up to 99 user defined programs

iStir HP 320a

Hot Plate Stirrer



**Max. 2200 RPM,
10 Ltr., 320°C**

- ◆ Compact design
- ◆ Plug and play operation
- ◆ Variable speed from 500 to 2200 RPM
- ◆ Optional multiple reaction blocks available

iStir HP 320

Digital Hot Plate Stirrer



**Max. 2200 RPM,
10 Ltr., 320°C**

- ◆ Microprocessor controlled
- ◆ Set temperature by plate or by probe
- ◆ Choose between ceramic coated, stainless steel or aluminum top plates
- ◆ Variable speed and timer setting
- ◆ Safe temperature setting
- ◆ Optional multiple reaction blocks available

iStir OH Jr.

Slim Overhead Stirrer



**Max. 2200 RPM,
10 Ltr., 10 Ncm**

- ◆ Brushless DC motor
- ◆ Microprocessor controlled
- ◆ Plug and play operation
- ◆ Viscosity up to 1,000 mPas
- ◆ IP 42 compliant design

iStir OH Prime

Overhead Stirrer



**Max. up to 2000 RPM,
40 Ltr., 40 Ncm**

- ◆ Brushless DC motor
- ◆ Viscosity up to 30,000 mPas
- ◆ Unique Smart control stirring for continuous stirring at changing viscosity
- ◆ Variable speed and timer setting
- ◆ Safety cut for overload, over current and over temperature
- ◆ IP 54 compliant design

iStir OH Elite

Overhead Stirrer



**Max. up to 2000 RPM,
100 Ltr., 100 Ncm**

- ◆ Brushless DC motor
- ◆ Microprocessor controlled
- ◆ Unique Smart control stirring for continuous stirring at changing viscosity
- ◆ Power intermittent mode
- ◆ Viscosity up to 70,000 mPas
- ◆ Variable timer setting
- ◆ Safety cut for overload, over current and over temperature



iShak BL Uno VT

Digital Microplate Shaker



Max. 1800 RPM, 2 mm Ø

- ◆ Brushless DC motor
- ◆ Easy loading clamps
- ◆ Even orbital motion
- ◆ Includes attachment for 20 X 2 ml tubes

iShak Quattro

Digital 4 Plate Shaker



Max. 1200 RPM, 3 mm Ø

- ◆ Brushless DC motor
- ◆ Microprocessor controlled
- ◆ Pulse mode and favourite setting
- ◆ Variable speed and time setting
- ◆ Accommodates 4 skirted micro-plates / deepwell plates

iShak 3D-5

Digital 3D Shaker



Max. 120 RPM, 5 kgs

- ◆ Brushless DC motor
- ◆ Microprocessor controlled
- ◆ 3D rocking / tumbling motion at 7°
- ◆ Variable speed and time setting
- ◆ Unique run-pause-run pulse mode
- ◆ Accommodates different tubes - 20 X 15 ml & 16 X 50 ml

iShak TS4

4 Plate Incubating Shaker



Max. 1200 RPM, 3 mm Ø, 70°C

- ◆ Incubation range from ambient + 3°C to 70°C
- ◆ Microprocessor controlled
- ◆ Brushless DC motor
- ◆ Programmable pulse mode
- ◆ Accommodates up to 4 skirted micro-plates

iShak IS20

Digital Incubating Shaker



Max. 500 RPM, 20 mm Ø, 80°C, 7.5 kgs

- ◆ Brushless DC motor
- ◆ Microprocessor controlled
- ◆ Save up to 6 programs with 9 sub-programs each
- ◆ Safe temperature setting up to 90°C
- ◆ Orbital motion of 20 mm
- ◆ Program mode for motion, direction, speed, time, dwell time, loop operation and sequence
- ◆ IP 21 compliant design

iShak PS 10/20

Multipurpose Platform Shaker



Max. 500 RPM, 10 mm Ø (PS10), Max. 300 RPM, 20 mm Ø (PS20)

- ◆ Brushless DC motor
- ◆ Microprocessor controlled
- ◆ IP 21 compliant design
- ◆ Available in Orbital or Linear motion
- ◆ Program mode for motion, direction, speed, time, dwell time, loop operation and sequence
- ◆ Maximum loading capacity up to 7.5 kgs

iShak US15

Universal Platform Shaker



Max. 300 RPM, Max. 70 mm Ø

- ◆ Brushless DC motor
- ◆ Microprocessor controlled
- ◆ Maximum loading capacity up to 15 kgs
- ◆ Variable orbital diameter from 30 to 70 mm
- ◆ Save up to 6 programs with 9 sub-programs each
- ◆ Program mode for motion, direction, speed, time, dwell time, loop operation and sequence

iRupt Jr.

Mini Cell Homogenizer



Max. 4000 RPM, 3 x 2 ml

- ◆ Variable speed from 2800 to 4000 RPM
- ◆ Pulse mode function
- ◆ Variable cyclic intervals
- ◆ Compact and light weight
- ◆ Powerful motor to homogenize most challenging samples
- ◆ Lid lock safety

iRupt 24P

Cell / Tissue Homogenizer



Max. 4550 RPM

- ◆ Brushless motor
- ◆ Microprocessor controlled
- ◆ Variable speed from 490 to 4550 RPM
- ◆ Save up to 99 programs
- ◆ Variable cyclic intervals
- ◆ Accommodates different tubes 24 X 1.5 / 2 ml & 12 X 7 ml

iTherm CH25

Cooling - Heating Incubator



Temperature Range From Ambient -15°C to 60°C, 25Ltr.

- ◆ Digital temperature control
- ◆ 25 ltr. space for incubation of plates and flask
- ◆ Internal power outlet for small shakers, mixers & other instruments
- ◆ Accommodates up to 2 ltr. flask
- ◆ Compact footprint

iTherm D150-2

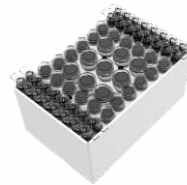
Double Block Dry Bath



Temperature Range From Ambient +5°C to 120°C

- ◆ Compact dual block design
- ◆ Microprocessor controlled
- ◆ Temperature setting
- ◆ Corrosion free SS top and heating wells
- ◆ Save up to 99 programs
- ◆ Choose from 4 types of reaction blocks
- ◆ Temperature uniformity of $\pm 0.3^{\circ}\text{C}$
- ◆ Temperature Accuracy of $\pm 0.2^{\circ}\text{C}$

OPTIONAL ATTACHMENTS



Hybrid Block 9 x 1.5 / 2 ml + 20 x 0.5 ml + 8 x 4 x 0.2 ml



28 x 1.5/2 ml Block



12 x 15 ml Block



5 x 50 ml Block



Neuation Technologies Pvt. Ltd.
info@neuation.com | www.neuation.com
Follow us on: @accumax.neuation